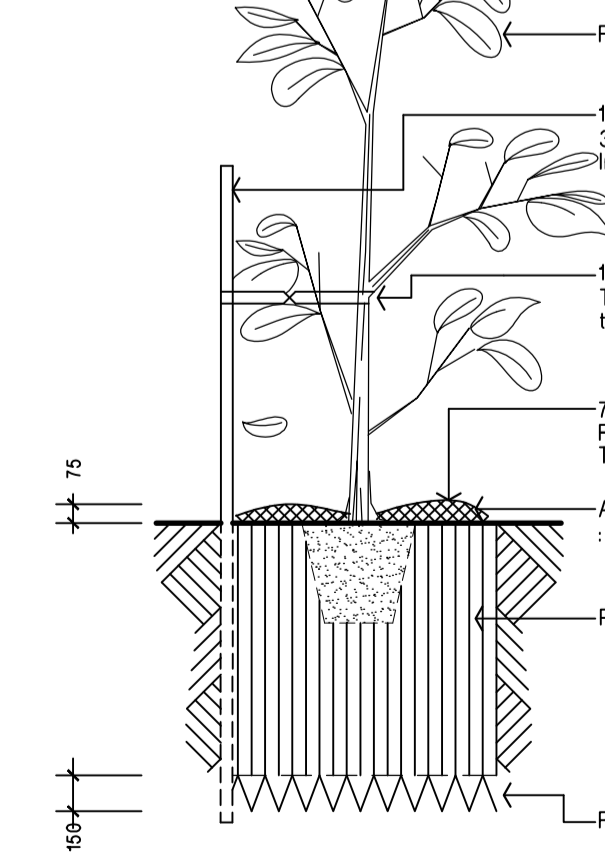
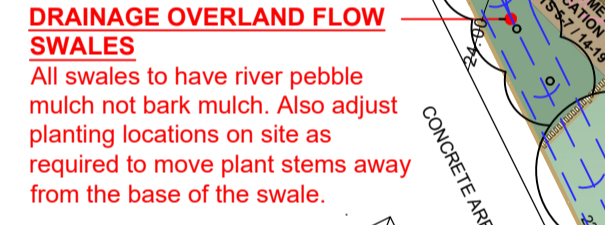
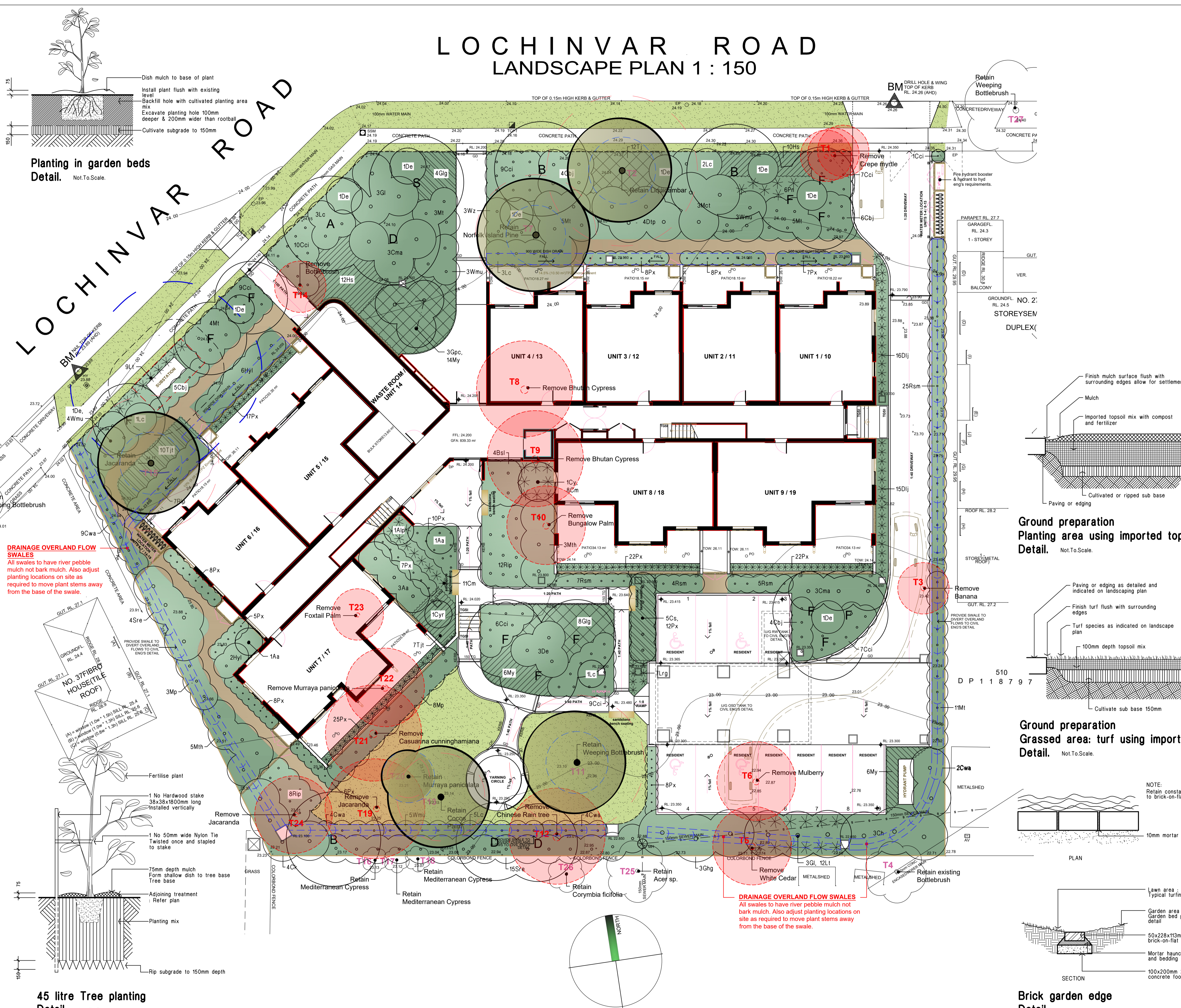
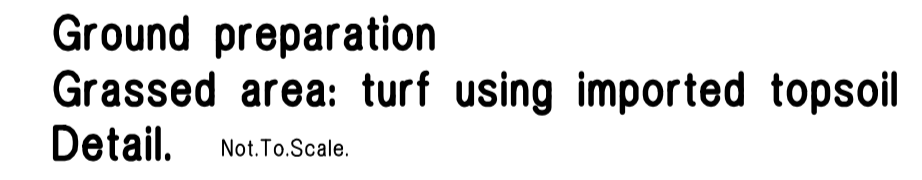
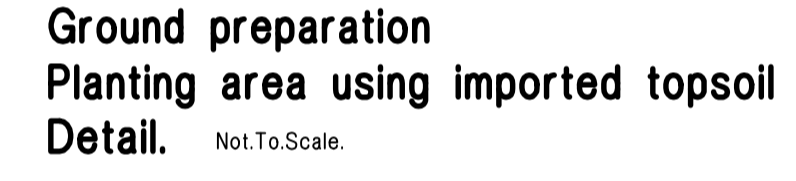


# LOCHINVAR ROAD LANDSCAPE PLAN 1 : 150



- ### LEGEND
- turf  
Excavate / grade all areas to be turfed to 120mm below required finished levels. Do not excavate within 1500mm of the trunk of any existing tree to be retained. Ensure that all surface water runoff is directed towards inlet pits, kerbs etc., and away from buildings. Ensure that no ponding will occur. Rip the subgrade to 150mm. Install 100mm depth of imported topsoil. Just prior to spreading the turf, spread "Shirley's No. 17 lawn fertilizer" over the topsoil at the recommended rate. Lay "Kikuyu" turf rolls closely butted. Fill and small gaps with topsoil. Water thoroughly.
  - brick garden edging  
Lay a single course of paving bricks in a mortar haunch (200mm wide and 100mm deep). The edges are to be laid in even curves and straight lines as shown on the plan. Where tight curves are shown use half bricks to show a more even curve. The top of the edges to finish flush with the adjacent turf and mulch levels.
  - existing trees to be removed  
For further information regarding trees to be removed refer to the Arborists report prepared by 'Creative Planning Solutions - 18/8/23, Ph No: 02 8039 7461'
  - existing trees to be retained  
For further information regarding trees to be retained refer to the Arborists report prepared by 'Creative Planning Solutions - 18/8/23, Ph No: 02 8039 7461'
  - mulch only access
  - planting areas  
Ensure that the mass planting areas have been excavated to 300mm below finished levels. Rip to a further depth of 150mm. Supply and install 300mm soil mix. Soil mix to comprise of one part approved compost to three parts topsoil. Topsoil shall be either imported topsoil or stockpiled site topsoil (if suitable: No clay). Install 75mm depth of selected mulch.
  - maintenance:  
All landscape works are to be maintained for a period of three months from the date of practical completion. This includes all watering, weeding, spraying and re-mulching necessary to achieve vigorous growth. Any defects which arise during this period are to be rectified immediately. Any plants or areas of turf which fail during this period are to be replaced at no additional cost.
  - irrigation:  
All planting areas on the landscape plan are to be covered by a fully automatic drip irrigation system. All pipework is to be PVC to satisfy AS 1477. All installation is to satisfy the Sydney Water Code and AS 3500. The system is to be installed by a suitable licenced contractor. All equipment and workmanship is to be guaranteed for a minimum period of 12 months.
  - fencing:  
For all fencing types and materials refer to the Architects plans.



### PLANT SCHEDULE

Code	Latin Name (Common Name - Mature Height)	Qty	Size	Stake
<b>Trees</b>				
A	Acacia elata (Cedar Wattle - 12m)	1	45 litre	yes
B	Brachycton acerifolium (Flame tree - 8m)	3	45 litre	yes
D	Melaleuca decora (Paperbark - 6m)	3	45 litre	yes
F	Eucalyptus ficifolia 'Summer Red' (Red flowering gum - 5m)	12	45 litre	yes
S	Eucalyptus sideroxylon 'rosea' (Ironbark - 10m)	1	45 litre	yes
<b>Shrubs</b>				
Aa	Asplenium australasicum (Birds nest fern - 1m)	5	5 litre	-
Alp	Alpinia caerulea (Native ginger - 2m)	1	5 litre	-
Bsl	Blechnum 'Silver lady' (Water fern - 0.7m)	4	5 litre	-
Cy	Cyathea cooperi (Tree fern - 2m)	1	5 litre	-
Cs	Camellia sasanqua (Sasanqua - 3m)	5	15 litre	yes
Cbj	Callistemon 'Better John' (Dwarf Bottlebrush - 1m)	19	5 litre	-
Cci	Casuarina 'Cousin it' (Prostrate casuarina - 0.3m)	58	5 litre	-
Cyr	Cycas revoluta (Cycad - 1.5m)	1	5 litre	-
Ch	Callistemon harkness (bottlebrush - 4m)	3	5 litre	-
Ck	Callistemon 'Captain Cook' (Bottlebrush - 2m)	4	5 litre	-
Cwa	Callistemon 'White Anzac' (White Bottlebrush - 1.5m)	19	5 litre	-
Cma	Callistemon 'Macarthur' (Bottlebrush - 1.8m)	6	5 litre	-
De	Doryanthis excelsa (Gymea lily - 1m)	12	15 litre	-
Dtp	Donostea triquetra (Common hop bush - 3m)	4	5 litre	-
Gh	Grevillea 'Honey gem' (Grevillea - 3m)	4	5 litre	-
Gpc	Grevillea 'Peaches & Cream' (Grevillea - 1.5m)	3	5 litre	-
Gl	Grevillea 'Moonlight' (Moonlight grevillea - 3m)	6	5 litre	-
Hyl	Hymenosporum flavum 'Lushious' (Native frangipani - 0.5m)	8	5 litre	-
Lc	Leptospermum 'Cardwell' (Dwarf Tea Tree - 2m)	15	5 litre	-
Mp	Murraya paniculata (Cosmetic bark tree - 3m)	11	5 litre	-
Mt	Melaleuca thymifolia (Rock Myrtle - 1m)	28	5 litre	-
Mct	Melaleuca 'Claret Tops' (Paperbark - 1.2m)	3	5 litre	-
Mth	Metrosideros thomasi (NZ Christmas Bush - 2m)	8	5 litre	-
Px	Philodendron xanadu (Dwarf philodendron - 0.5m)	175	5 litre	-
Rsm	Raphiolepis 'Snow maidens' (Indian hawthorne - 0.75m)	41	5 litre	-
Rip	Raphiolepis 'Oriental Pearl' (Dwarf Indian hawthorne - 1m)	27	5 litre	-
Sre	Syzygium australe 'Resilience' (Lilly Pilly - 3m)	19	5 litre	-
Wmu	Westringia fruticosa 'Mundi' (Westringia - 0.6m)	15	5 litre	-
Wz	Westringia 'Zena' (Westringia - 1m)	3	5 litre	-
<b>Groundcovers</b>				
Cm	Clivia miniata (Kaffir lily - 0.5m)	19	150mm pot	-
Dij	Dianella 'Little jess' (Dianella - 0.4m)	31	150mm pot	-
Gj	Grevillea lanigera (n/a - 0.3m)	12	150mm pot	-
Hs	Hibbertia scandens (Guinea flower - climber)	22	150mm pot	-
Lrg	Liriope 'Evergreen Giant' (Giant liriope - 0.5m)	7	150mm pot	-
Lt	Lomandra longifolia 'Tanika' (Fine leaf dwarf lomandra - 0.6m)	21	150mm pot	-
My	Myoporum parvifolium (Creeping Boobiala - 0.2m)	26	150mm pot	-
Pn	Pennisetum alopecuroides 'Nafray' (Swamp foxtail - 0.8m)	6	150mm pot	-
Tj	Trachelospermum jasminoides (Star jasmine - 0.3m)	12	150mm pot	-
Tjt	Trachelospermum tricolor (Variegated jasmine - 0.3m)	17	150mm pot	-